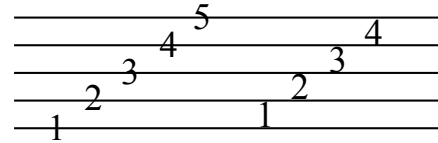


Name \_\_\_\_\_

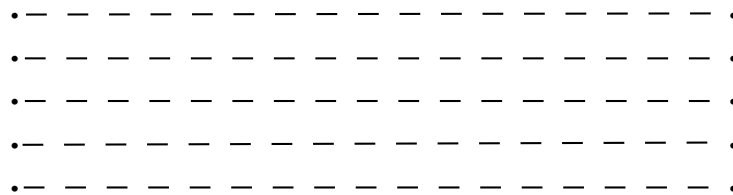
Date \_\_\_\_\_

# The Staff

The musical **staff** is made up of five **lines** and four **spaces**. Lines and spaces are both numbered from low to high.



1. Practice drawing two staves by connecting the dots.  
Use a ruler to help draw straight lines.



2. On the first staff, number the lines from low to high.

3. On the second staff, number the spaces from low to high.

4. Draw a note on each line of the staff below.

5. Draw a note on each space of the staff below.

